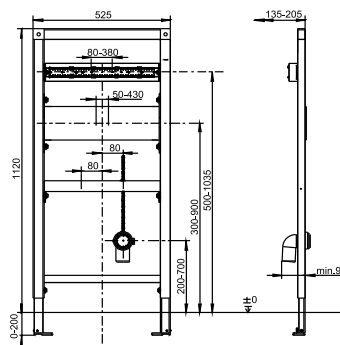


90.677.00..T000

## SANIT Sink element INEO wall mixer 1120/525



Item number	Product description
90.677.00..T000	<p>Sink element INEO for wall-mounted mixers  h/w/d: 1,120/525/85 mm, element can be adjusted to a height of 1220 mm by extending the feet, self-supporting, powder-coated steel frame, for covering with plasterboard, installation onto a solid wall, in drywall constructions etc., 4-point fastening, fully pre-assembled, includes support feet and fastening set, suits all laundry sinks, adjustment range of feet from unfinished floor level to upper edge of finished floor level: 0-200 mm, adjustment range front to wall: 135-205 mm (when mounted on wall brackets code no. 17.257.00..T000), with waste bend DN 50 (d:50) and sound-absorbing clamp, with threaded bar M8 x 300 mm, with 2 waterproof multiply laminated plywood panels, all traverses pre-assembled, packed in a box</p> <p>Accessories:</p> <ul style="list-style-type: none"> <li>- wall brackets (pair) code no. 17.257.00..T000</li> <li>- sound-absorbing sets</li> <li>- extension sets</li> </ul>