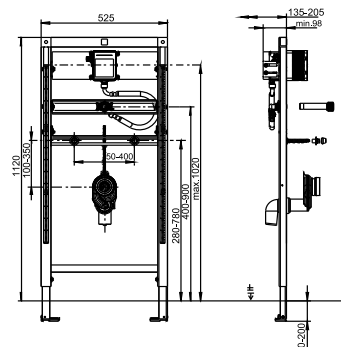


90.668.00..T000

SANIT Urinal element INEO cartridge technology 1120/525



Item number

90.668.00..T000

Product description

Urinal element INEO for urinal cartridge valve technology

h/w/d: 1,120/525/98 mm, self-supporting, powder-coated steel frame, for covering with plasterboard, installation onto a solid wall, in drywall constructions etc., 4-point fastening, fully pre-assembled, includes self-locking feet with swivel base plates and fastening set, suits all ceramic urinals, adjustment range of feet from unfinished floor level to upper edge of finished floor level: 0-200 mm, adjustment range front to wall: 135-205 mm (when mounted on wall brackets code no. 17.257.00..T000), with 2 M8 bolts for fastening urinal including protection plugs and chromium-plated protection caps, with waste bend DN 50(d:50) and sound-absorbing waste bend clamp, with threaded bar M8 x 300 mm, connection set d:25, with flexible metal hose, which can be screwed by hand, with SANIT universal cartridge roughing-in set with modifiable water connections for hand operated pneumatic cartridge valve or for 6V DC solenoid cartridge valve with infrared electronics, relative conductivity with urinal exhaust trap 500, all traverses pre-assembled, without urinal cover plate, packed in a box Accessories:

- wall brackets (pair) code no. 17.257.00..T000
- urinal flush actuators
- sound-absorbing sets
- extension sets
- connection set with spray nozzle code no. 05.013.00..0000