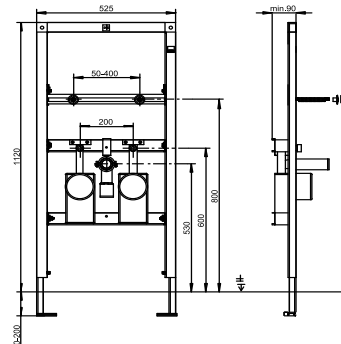
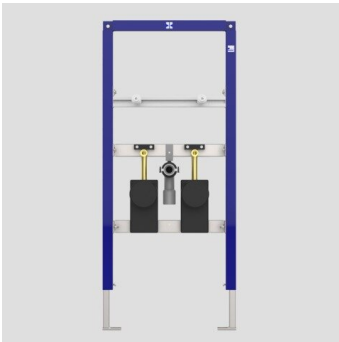


90.687.00..T000

SANIT Wash basin element INEO with water meter unit,1120



Item number

90.687.00..T000

Product description

Wash basin element INEO for single hole mixers, with 2 concealed water meter units, concealed valve und T-piece for angle valve and storey distribution
h/w/d: 1,120/525/90 mm, self supporting, powder-coated steel frame construction for covering with plasterboard, installation in front of a massive wall or in a light weight stud wall, 4 fixation points, completely pre-assembled, incl. feet and fixation material, universal application for wash basins and hand wash basins, adjustment range of feet from unfinished floor to upper edge of finished floor: 0-200 mm, depth adjustable from front edge of frame backwards: 135-205 mm (applying wall fixtures code no. 17.257.00..T000), with two fixation bolts M10 for wash basin incl. protection and nuts, with universal outlet bend DN 50 (d:50)/DN 40 (d:40) incl. rubber sleeve for trap outlet pipe DN 40(d:40)/DN 32 (d:32), protection and sound insulated clamp, including two pre-mounted, sound insulated, distortion-proof concealed water meter fitting kits made of red brass with concealed valve R3/4, concealed single pipe connectors for water meter measuring capsule Koax G2B, with extension for angle valve R1/2, with storey distribution upwards R3/4, two-part insulation and integrated plaster aid, including fastenings and connectors, packed in a box

Note: regarding covering rosettes, handles etc. for concealed valves, please contact company Flamco Accessories: - wall brackets (in pairs) code no. 17.257.00..T000 - sound-absorbing sets - extended support feet code no. 16.033.00..0000